



The Provider Connection

ywca
greater toledo
child care resource
and referral

PUBLISHED BY:
YWCA CHILD CARE RESOURCE AND REFERRAL OF LIMA & TOLEDO, OH

TAMI TALKS...

A Word from Tami Matthews, Director of Child Care Resource and Referral

Greetings!

As we move into spring, we also move into a time for planning and new opportunities. As we are all aware, the economic climate in our state remains quite challenging. Potential funding cuts for various programs and services may be looming; and that may likely have some impact on services at the *YWCA Child Care Resource and Referral*.

With this in mind, as a cost saving measure, we plan to begin offering the Provider Connection electronically beginning with our July/August/September edition. We will be emailing the newsletter to those on our mailing list. Additionally, we will ensure that an electronic version of our newsletter can be accessed via our website and/or new Facebook page. Rest assured, the electronic newsletter will still be packed full of relevant and timely information for you!

We also have some exciting opportunities to share! We have been busy planning our annual "Provider Appreciation Day" event, which will be held on Friday, May 6, 2011. We hope this special event will prove to be a wonderful opportunity for relaxation and inspiration. So, be sure to save the date!

Another great opportunity for child care administrators, in development, is the expanded capabilities of the Director Information Portal (DIP), which will provide a variety of useful options to serve programs more efficiently. So, stay tuned for more news to come.

Spring is a hopeful time. No matter how harsh and cold the winter, new life always miraculously emerges. So, too, does our resolve to continue improving and providing services that support quality early care and education. Happy Spring!

Yours in Service,
Tami



STAFF SPOTLIGHT

SARAH TARRY
STEP UP TO QUALITY SPECIALIST
TOLEDO

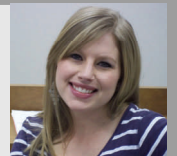
Sarah Tarry has worked for the *YWCA Child Care Resource & Referral* since 2008, as a Preschool Specialist. She graduated from The University of Toledo, in 2007, with a Bachelor of Science Degree in Psychology. While attending UT, she participated in Camp Adventure, doing an internship at a Child Development Center in Vicenza, Italy, as an assistant preschool teacher. Sarah worked at a child care center, prior to working at the YWCA.

Sarah is a *Step Up To Quality* approved trainer for all preschool workshops, including Mind in the Making. Sarah also provides technical assistance for preschool teachers. She helps programs improve their quality of care, as well as helping them become rated in *Step Up To Quality*.

Sarah enjoys working with preschoolers and their teachers. Her goal is to have a positive impact on the programs she works with, helping them strive for quality within their programs.

STAFF SPOTLIGHT

TARA KRENDL
ADMINISTRATIVE ASSISTANT, LIMA



Tara Krendl is passionate about working in the field of early childhood education. She mentored a third grade class while in high school, sparking her interest in bettering the education of students. It really touched her, knowing that because of her, students were grasping things they hadn't before, and their grades were improving. She majored in Early Childhood Education at Wright State University before transferring to The Ohio State University, where she graduated with a Bachelor of Science degree in Business Administration.

Tara started working with the *YWCA Child Care Resource & Referral* in May 2010, bringing full circle her career in child care services. As the Administrative Assistant, she has the opportunity to combine her education, passion, and talents to better serve the community in their child care needs.

In her spare time Tara enjoys spending time with her family and friends. She is also a volunteer cheerleading advisor for the Upward basketball program, coaching kindergarten and first grade girls. She is honored to be a role model for children, seeking both spiritual and athletic guidance.

Parent Connections...tips for communicating with parents

STAY CONNECTED! SUBMITTED BY TRACEY HAYGOOD, COMMUNITY OUTREACH SPECIALIST

Being a quality child care provider means many things. One thing that gets overlooked is keeping your contact information up to date. The YWCA Child Care Resource and Referral strives to have the most current data in our database, so when parents call looking for quality child care we can give them the **correct** information about your services.

When your address, phone number or email address changes please give us a call and let us know, that way we are assured that we are giving correct referral information to parents. We are also starting to send information out via email. If you would like to be on our email list, please give us a call.

In Lima: 1-800-992-2916 or in Toledo: 1-800-632-3052

Family Child Care

BUILD BUSINESS BY NETWORKING!

SUBMITTED BY PEG LOEHRKE, PROVIDER SPECIALIST

When running a family child care business out of your home, it is important to think of yourself as a professional with a career. One of the ways to "market" your business is through what is commonly referred to as "networking." Don't be afraid to become involved in community programs, activities and groups. By working with and getting to know other people, you have the perfect opportunity to tell them about your business and make them aware of your presence and the service you provide.

You may also want to consider getting involved with Habitat for Humanity. By offering child care to those who are volunteering their services at one of their sites, not only will you be providing a needed service, but also promoting your business. Be sure to keep your business cards handy. Remember, the key to a successful and thriving business is persistence!!

If you would like to explore this or other FCC topics, sign up for a Linked Learning Community for Family Child Care in your area.

Way To Go!!!

We would like to give a round of applause to those who have gone above and beyond licensing requirements to participate in Step Up To Quality! The following providers have recently received a star rating:

3 STAR RATING

LUCAS COUNTY

CHILDREN'S DISCOVERY CENTER
(TALMADGE)

GROWING MINDS

2 STAR RATING

LUCAS COUNTY

JCC/YMCA AT THE SEKACH CENTER

LEARNERS FOR LIFE

MARIA EARLY LEARNING CENTER

OLIVET CHRISTIAN NURSERY

2 STAR RATING

LUCAS COUNTY

SON-SHINE EDUCATIONAL DAY CARE

MERCER COUNTY

KIDS KASTLE

WOOD COUNTY

YMCA CHILDCARE AT THE ADVENTURE CENTER

1 STAR RATING

LUCAS COUNTY

ASBURY FIRST STEPS CHILDREN'S
LEARNING CENTER

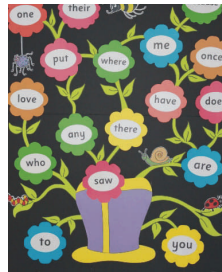


2

WALLS THAT WORK SUBMITTED BY SARAH TARRY, SUTQ SPECIALIST

In the last edition of *The Provider Connection* we addressed different items to display on your classroom walls. Materials displayed on the walls send messages to the children, families, and visitors that come into your room. Make sure that what you post on the walls reflects the culture of your classroom. Before displaying anything on the wall, ask, Will it...

- reinforce children's experiences?
- highlight children's creativity and skills?
- make children feel proud of their work?
- extend learning?
- document children's activities and learning?
- tell others what we do in our program?
- beautify the room?
- create a homelike setting?
- meet a health or safety requirement?



If you answer yes to one or more questions, then the item is worthy of display. When displaying materials be sure to hang items at the children's eye-level.

*Look for more "Walls That Work" in the next issue of *The Provider Connection*.
Laura J. Colker. "Walls That Work." *Teaching Young Children* Volume 1, Issue 4 (2008): Pages 14-17.

IDEAS TO HELP CHILDREN LEARN TO LOVE THE EARTH

SUBMITTED BY HEATHER DUNZWEILER, SUTQ SPECIALIST

Grow flowers or vegetables in wooden planter boxes

A planter box gives children a chance to dig in dirt, watch flowering plants grow and bloom, or share a taste of the vegetables they grew themselves.

Think differently about weather

A rainy or snowy day doesn't have to mean staying indoors. Consider keeping some inexpensive rain coats and rubber boots on hand so that children can splash in puddles and play in the rain. (Never take children outside when lightning is part of a rainstorm.) Encourage children to create snow sculptures or hunt for tracks left by animals. Try placing a few nuts in the shell outside, then; come back the next day to see what happened.

Go on I Spy walks in your neighborhood

The next time you take a walk with children, encourage everyone to see how many natural wonders they can find. Examine the spider's web on a downspout or talk about how the dandelion can poke its way through a crack in the sidewalk. Even in cities, nature often finds a way to make its presence known and to survive, a good life lesson for us all.

Create a worm bin

Finding ways to foster children's curiosity about creatures like worms or spiders or bees can help them overcome any fears that may develop without frequent interaction. For example, make a simple worm bin in a metal stock tank (found at farm implement stores), or just use a large galvanized metal bucket. Then allow children to feed, handle, and care for worms until any fears subside and the wonder begins. You can also cut the top off of a 2 liter pop bottle, fill it with worms and dirt, cover the top and sides with black construction paper, and remove paper when you want to see the tunnels the worms have dug. Try giving them some oatmeal to eat.

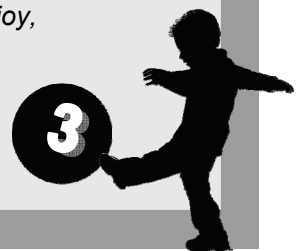


Rediscover your own sense of wonder

"If a child is to keep alive his inborn sense of wonder, he needs the companionship of at least one adult who can share it, rediscovering with him the joy, excitement, and mystery of the world we live in." Rachel Carson ([1965] 1998, 54-55). Why not decide today that you will be that adult?

Grow flowers in planter boxes

Ideas from NAEYC *Young Children Magazine*, January 2008



Administrators

HATS OFF TO YOU!

SUBMITTED BY KATHI DIXON, SUTQ SPECIALIST



DIRECTOR, Dreamer, Impartial, Responsible, Educator, Caring, Time manager, Open, Resourceful. That is a lot of hats to fill not to mention, substitute teacher, toilet fixer and counselor. So much to do, so little time!

To read articles on the various topics that managers come across, please visit the following website: <http://cecl.nl.edu/public/dl.htm>. Search under "Public Awareness, The Director's Link". For example: supporting language development of infants and toddlers, program handbooks and transporting children in your care. This is a very informational website for child care professionals. We can make a difference!

TRAINING FEE REMINDER

- Payments for training fees are due no later than 3 business days before the date of the training. If payment has not been received by the due date your registration will be cancelled.
- Payment by credit card is accepted over the phone.
- Payment by check is accepted by mail and payment with cash is accepted in person (exact amount only).
- When mailing payments, please include the confirmation page from opdn.org and be sure to include the name of the participant, their OPIN number, the employer's address and the contact email address and phone number. All receipts will be emailed to the contact email address listed on your confirmation page.
- If an email address is not provided you will **not** receive a receipt. Complete policy details are listed on opdn.org once your registration has been completed.

FIELD TRIP TIPS! SUBMITTED BY RUGENA MODISETT, AFTERSCHOOL SPECIALIST

When planning for your summer program's field trips here are some important tips to keep in mind:

Choose field trips that interest your school-agers.

- Going to the zoo every Monday is in the budget- but focus on a *few* specific animals at a time. Study the animals, how they eat, and what kinds of food they eat. Go back to your facility and look up that animal, fix a snack and eat like the animal ate.
- When going on long rides to the field trip, keep in mind the time that will be actually spent on the trip. Remember the time for the ride there and back and bathroom breaks. Sometimes the long ride can wear the school-agers out.
- Remember how the school-agers reacted the last time they went to the same place. Did they get anything out of it? Were they interested? Is this a place where they cannot touch anything? Be mindful that they are going to touch anyway!

A field trip can be taken right in your classroom!

- Bring the world to you- through imagination. Tell or read an instructional story, using rich, sensory descriptions - as if the school-agers were actually in the story!
- Taking field trips through the imagination provides simple and engaging ways to reinforce vocabulary, skills and concepts in the curriculum.

LINKED LEARNING COMMUNITIES

Linked Learning Communities are still ongoing to assist you in your continual work to provide quality child care by sharing, collaborating and networking with other child care professionals. To join a Linked Learning Community and begin moving the quality of your program to a deeper level, call 1-800-632-3052 in Toledo or 1-800-992-2916 in Lima to register. Refreshments and age appropriate resources will be provided.



SAVE THE DATE! PROVIDER APPRECIATION DAY!

Friday, May 6, 2011 is Provider Appreciation Day! As always, The YWCA Child Care Resource and Referral will offer an event to show our appreciation for **YOU**, the child care professional! More information is coming soon.

YWCA Child Care Resource and Referral *Invites You to Join Us*

Resource Library
OPEN HOUSE

Demonstrations every 15 minutes of our Laminator, Ellison™, Book Binder, and Cricut™ will be available.

June 8, 2011
From 5-7 pm



Books and materials will be available in the following areas: Administration, CD's/DVD's/ Tapes, Infant & Toddler, Inclusion, Parenting, Prop Boxes, Preschool, and School Age. Materials will be available to checkout during the Open House.

(419)255-5519 or 1-800-632-3052

READ WHAT OTHER CHILD CARE PROVIDERS ARE SAYING ABOUT OUR RESOURCE LIBRARIES!

"Our local Resource Library is a treasure trove we often overlook. What better way to introduce new themes, toys, books, and activities to your children, and ALL for FREE. When you have limited space and limited funds, it's great to be able to borrow these items and then return them." Per Patricia LaBauve

"I love these prop boxes! What a good idea! Wow! This laminator is great! You've got some really wonderful things in your library." Per Rita Wilson

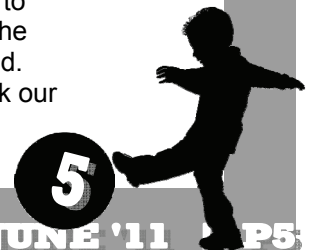
"I really love the services the YWCA CCR&R is providing. I like the materials that you do have available in your resource library." Per Jamesetta Dickerson

"Thank you for the opportunity to serve our preschoolers better and less time for the staff in cutting out patterns." Per Judy Fox

Staff are available to assist child care providers with laminating, the use of paper crafting equipment, and checking out activity prop boxes and books. Please call in advance to schedule a visit to our libraries.

CHECK OUT OUR FACEBOOK PAGE!

YWCA Child Care Resource and Referral is now on FACEBOOK! We plan to utilize this page to showcase interesting, relevant articles and activity ideas for child care providers, parents and the community. In addition, information on training content and events we are hosting will be posted. So when you are on Facebook be sure to check out the insightful information we have and click our "Like" button!



**YWCA Child Care Resource and Referral
TOLEDO LOCATION**
1018 Jefferson Ave.
Toledo, OH 43604
(419)255-5519 | (800)632-3052

YWCA Child Care Resource and Referral
LIMA LOCATION
(419)225-5465 | (800)992-2916

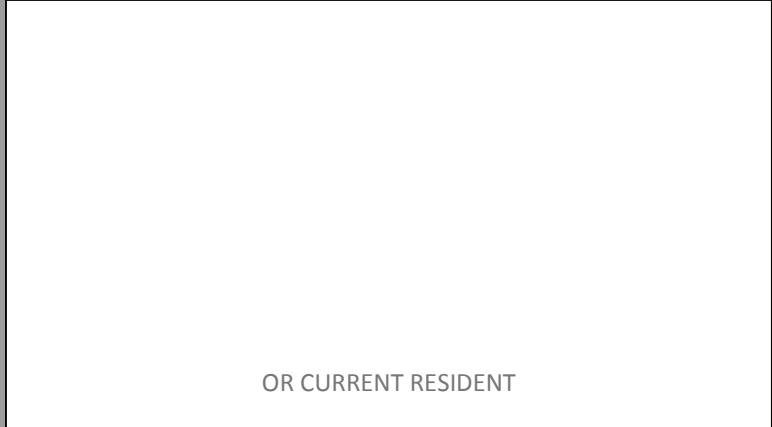
Non-Profit Organization
U.S. POSTAGE PAID
TOLEDO, OH
PERMIT #747



ywca
greater toledo
child care resource
and referral



**The Provider
Connection**



OR CURRENT RESIDENT

THE PROVIDER CONNECTION NEWSLETTER FOR CHILD CARE PROFESSIONALS

THE PROVIDER HIGH SPEED CONNECTION Quick Reference to Online Resources

IN THIS ISSUE

Stay Connected
FCC Networking
Walls That Work Part Two
Ideas For Earth Day
Website Help For Directors
Field Trip Tips
Resource Libraries

YWCA Child Care
Resource and Referral
www.ywcatoledo.org

Ohio Professional
Development Network
www.opdn.org

Step Up To Quality
www.stepuptoquality.org

OCCRRA
www.occrra.org

United Way
www.unitedwaytoledo.org
www.unitedwaylima.org

Catch

Our

Next

Issue

Next

Summer

